



AtlanticEast

NANTUCKET REAL ESTATE

508-228-7707

Linda Bellevue
508-325-2700

Price: \$1,095,000 Address: 12 Goldfinch Drive

Area: Naushop

Owner: Spychalski

Type: Single Family Status: Available
 Map/Parcel: 68/602 Lot #: 350
 Zoning: R5 Lot Size (SF): 5,230
 Deed: COT # Lot Size (A): 0.1200
 16006
 Wtr Frontage: None GLA: 1,816
 Water View: None Water: Town
 Other View: Residential Sewer: Town
 Year Built: 1994 Rooms: 7
 Remodeled: Beds/Baths: 3/2.5
 Furnished: Un-Furnished
 Second Dwelling: None



www.linknantucket.com

Antique character in this three plus bedroom, two and one-half bath home in Naushop with David Wiggins hand painted murals and floors throughout. Components of three interior period homes have been reconfigured into this unique, antique looking Naushop home. Quality construction.

Basement: Crawl space.

1st Floor: Foyer opens to a beamed library or den, dining room, powder room, soap stone kitchen countertops and large living room with hand painted panel wall with fireplace, door leads out to a private patio.

2nd Floor: Large landing suitable for a desk or table, master bedroom has a tray ceiling and private bath with linen and clothing closets. Two additional bedrooms share a hall full bath.

Building Information

First Floor Bedrooms: 0
 Heating: Oil\FHW
 Fireplaces: 1
 Floors: Cherry
 Yard: Yes
 Parking: Yes
 Foundation: Poured
 Lead Paint: No
 Recreation and Outdoor: Patio, Community Pool, Community
 Spaces: Tennis Court

Appliances and Other Amenities

Stove: Viking
 Refrigerator: LG
 Dishwasher: Viking
 Washer: Maytag
 Dryer: Maytag
 Tv Service: Cable
 Amenities: Insulation, Irrigation

Taxes and Fees

Assessment Year: 2011
 Building Assessment: \$340,500
 Land Assessment: \$335,400
 Total Assessment: \$675,900
 Estimated Taxes: \$2,420

Condo Fees: \$0
 Condo Fees Include:

Easements

Naushop Covenants, annual HO association fees of approximately \$2,000. Exclusions are non-electrified lamp at top of stairs, quarterboard, whale weathervane and Paul McCarthy carved eagle.

Other Comments

None



AtlanticEast

NANTUCKET REAL ESTATE

508-228-7707

Linda Bellevue
508-325-2700



The information contained herein is believed to be reliable but is not guaranteed.



AtlanticEast

NANTUCKET REAL ESTATE

508-228-7707

Linda Bellevue

508-325-2700



The information contained herein is believed to be reliable but is not guaranteed.



AtlanticEast
NANTUCKET REAL ESTATE

508-228-7707

Linda Bellevue
508-325-2700



The information contained herein is believed to be reliable but is not guaranteed.



AtlanticEast
NANTUCKET REAL ESTATE

508-228-7707

Linda Bellevue
508-325-2700



The information contained herein is believed to be reliable but is not guaranteed.



AtlanticEast

NANTUCKET REAL ESTATE

508-228-7707

Linda Bellevue
508-325-2700



The information contained herein is believed to be reliable but is not guaranteed.

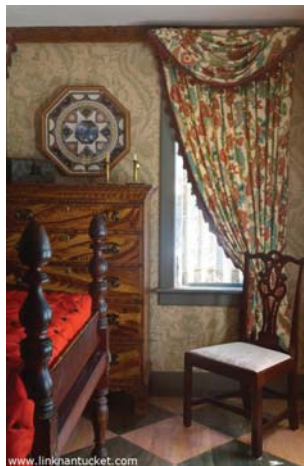


AtlanticEast

NANTUCKET REAL ESTATE

508-228-7707

Linda Bellevue
508-325-2700



The information contained herein is believed to be reliable but is not guaranteed.



AtlanticEast

NANTUCKET REAL ESTATE

508-228-7707

Linda Bellevue

508-325-2700

