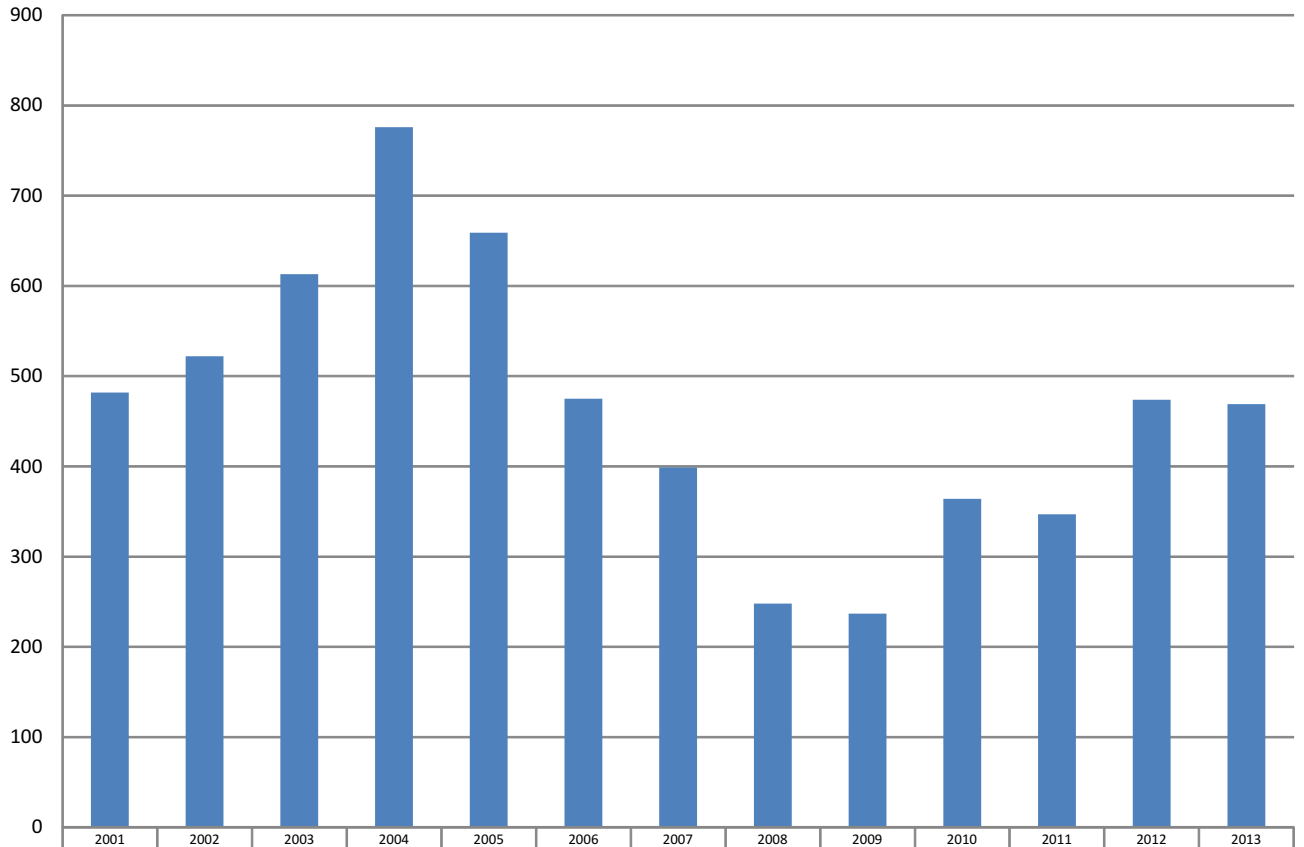


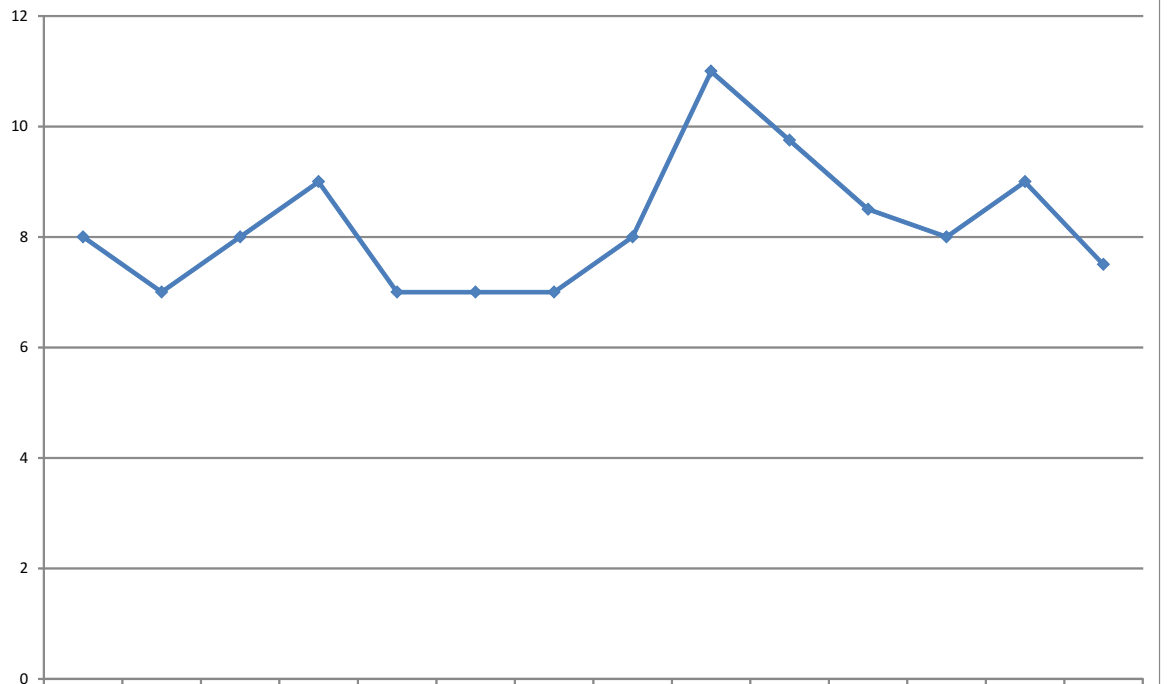
Nantucket: Total Annual Number of Sales

4th Q 2013



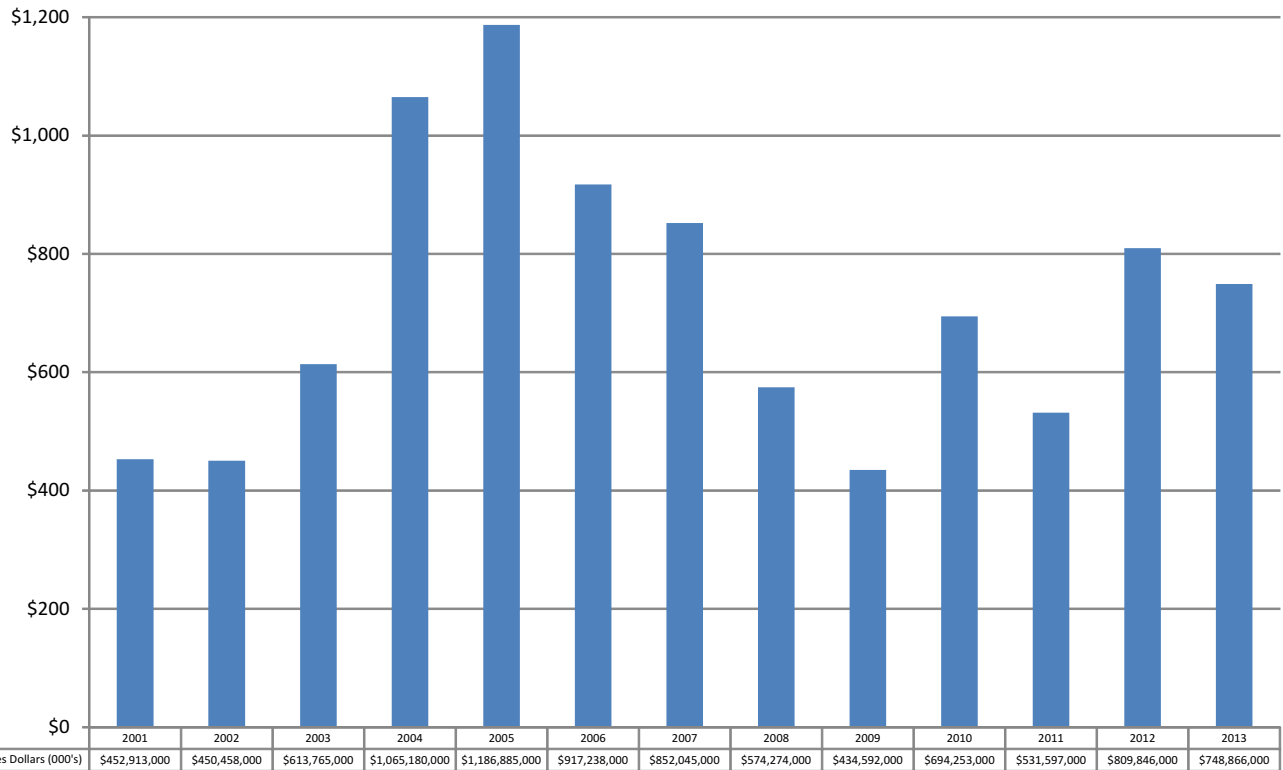
Total Number of Sales	2001	2002	2003	2004	2005	2006	2007	2008	2009	2010	2011	2012	2013
	482	522	613	776	659	475	399	248	237	364	347	474	469

Nantucket: Average Months on Market All Properties

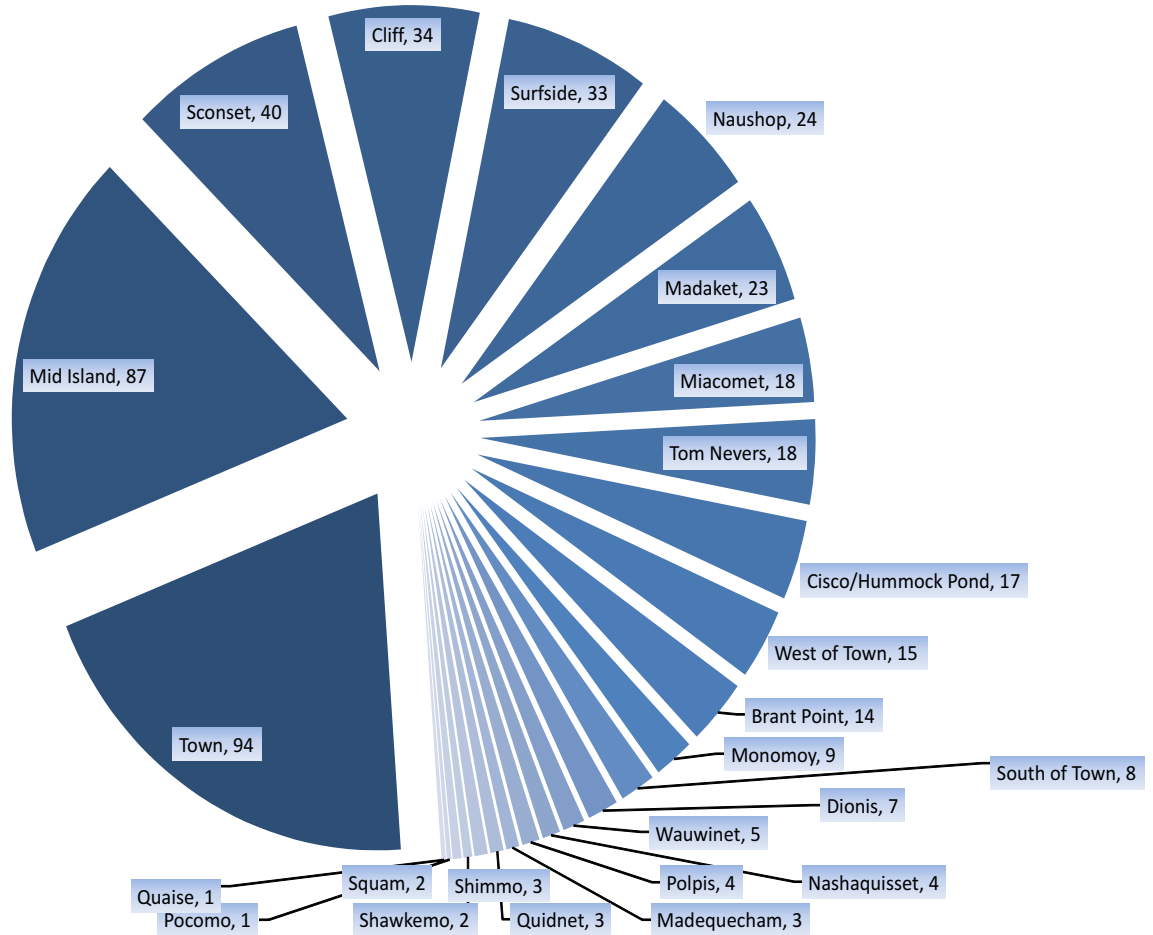


Average Months on Market	2000	2001	2002	2003	2004	2005	2006	2007	2008	2009	2010	2011	2012	2013
	8	7	8	9	7	7	7	8	11	9.75	8.5	8	9	7.5

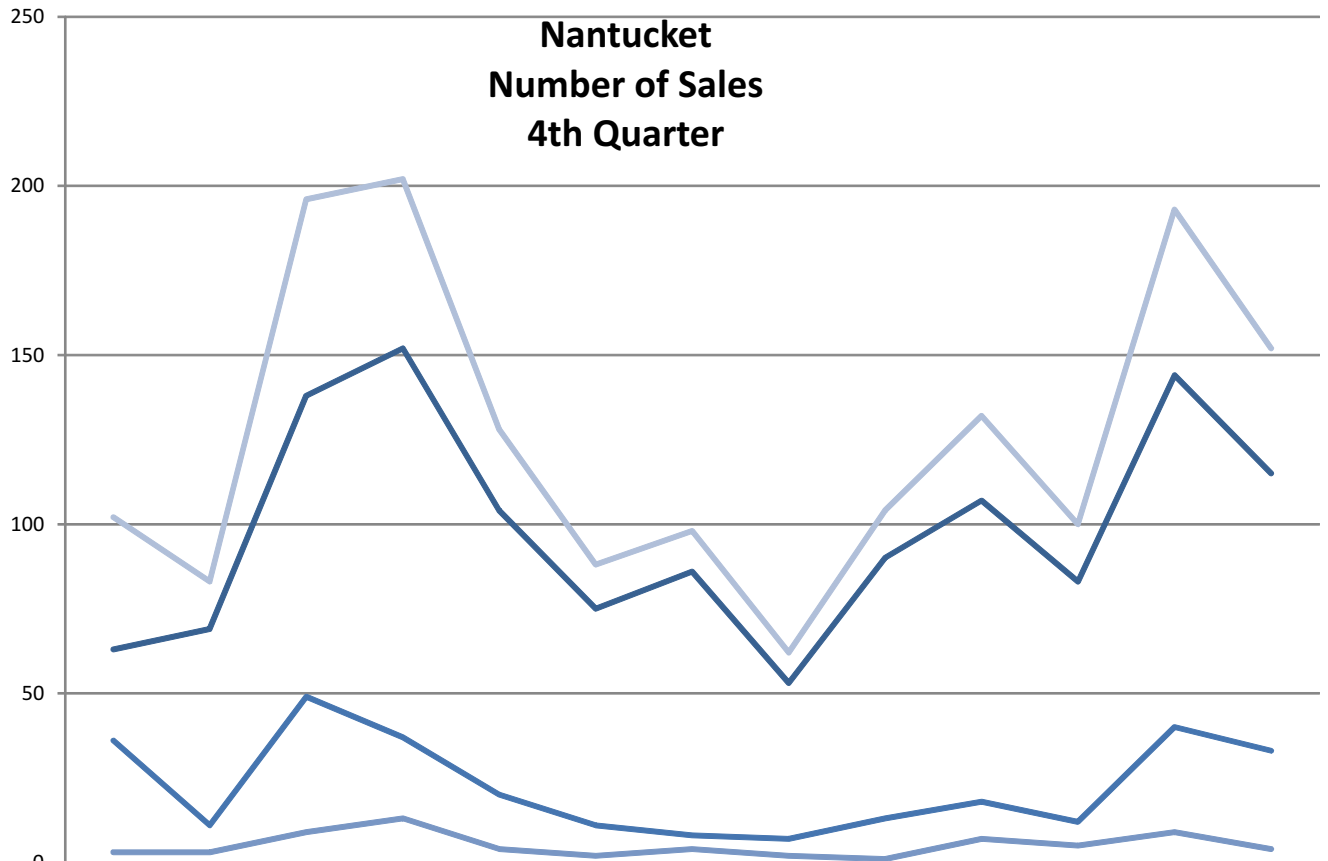
Nantucket: Total Annual Sales Dollars
4th Q 2013



SALES BY AREA 2013

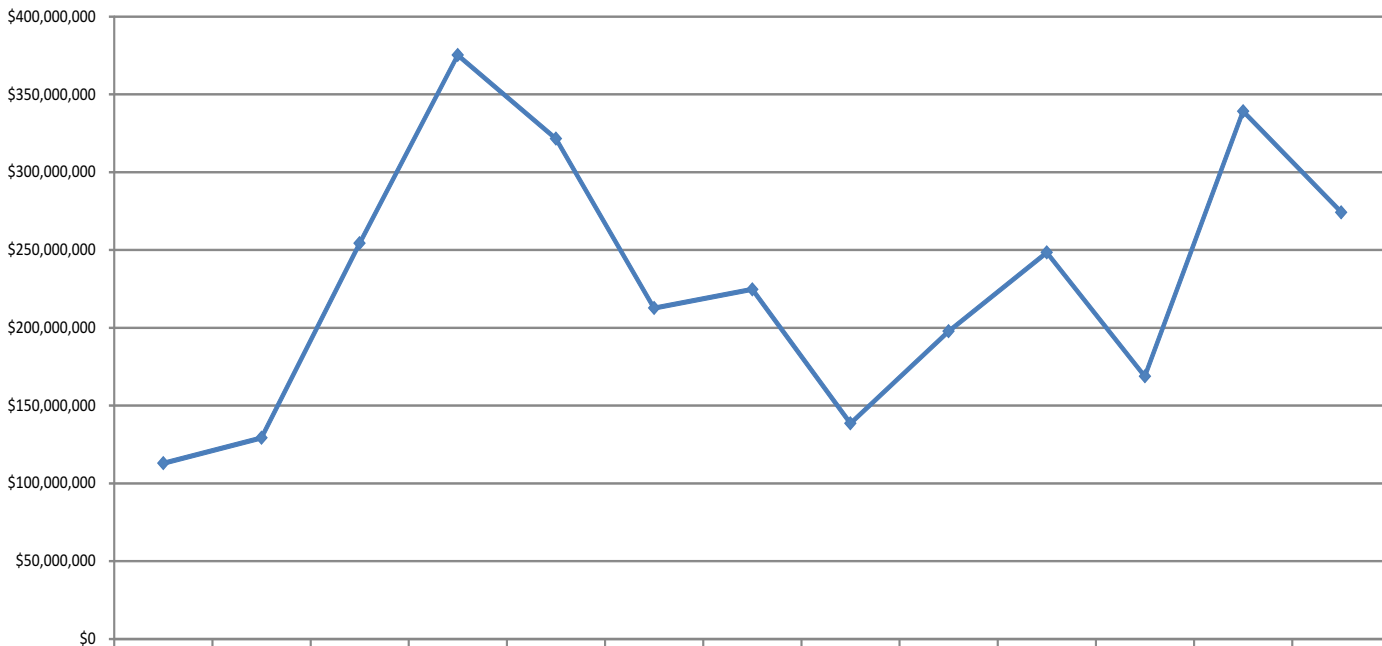


Nantucket Number of Sales 4th Quarter



	2001	2002	2003	2004	2005	2006	2007	2008	2009	2010	2011	2012	2013
Houses	63	69	138	152	104	75	86	53	90	107	83	144	115
Land	36	11	49	37	20	11	8	7	13	18	12	40	33
Commercial	3	3	9	13	4	2	4	2	1	7	5	9	4
Total	102	83	196	202	128	88	98	62	104	132	100	193	152

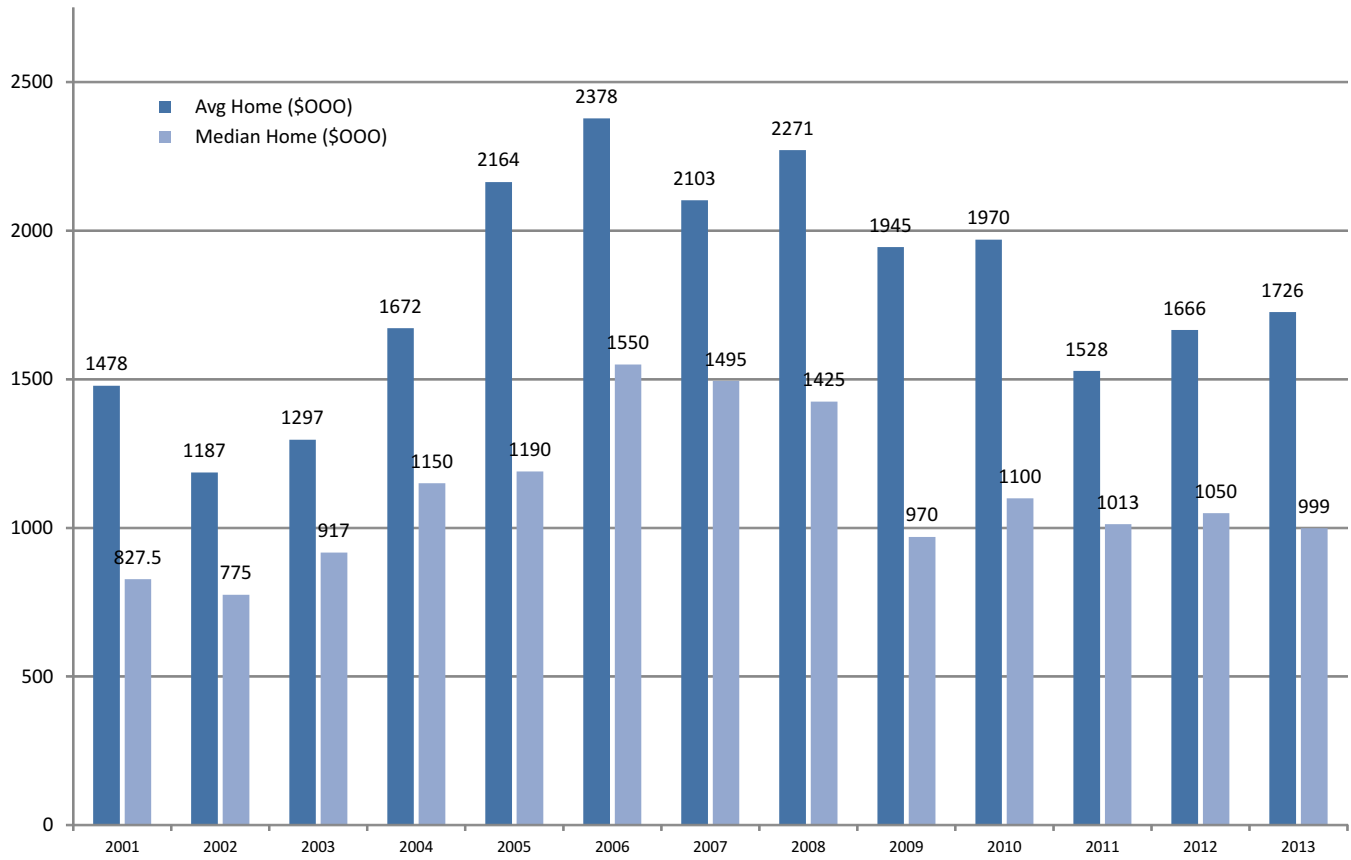
Nantucket Sales Dollars 4th Quarter



	2001	2002	2003	2004	2005	2006	2007	2008	2009	2010	2011	2012	2013
Dollars 4th Q. (000's)	\$112,920,000	\$129,241,000	\$254,306,000	\$375,258,000	\$321,509,000	\$212,628,000	\$224,654,000	\$138,566,000	\$197,759,000	\$248,357,000	\$168,790,000	\$339,059,000	\$274,190,000

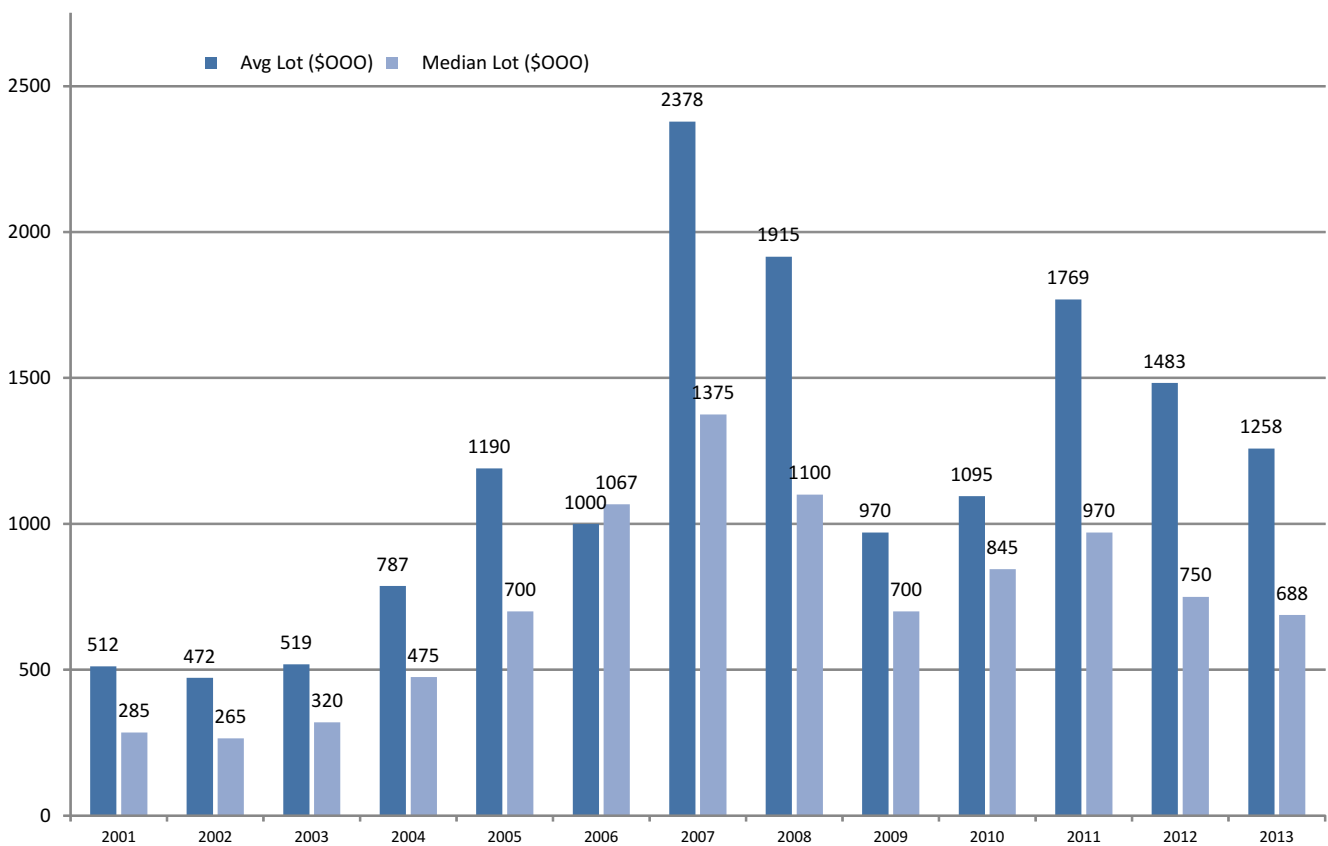
Nantucket: Home Prices 2001 - 2013

4th Q 2013

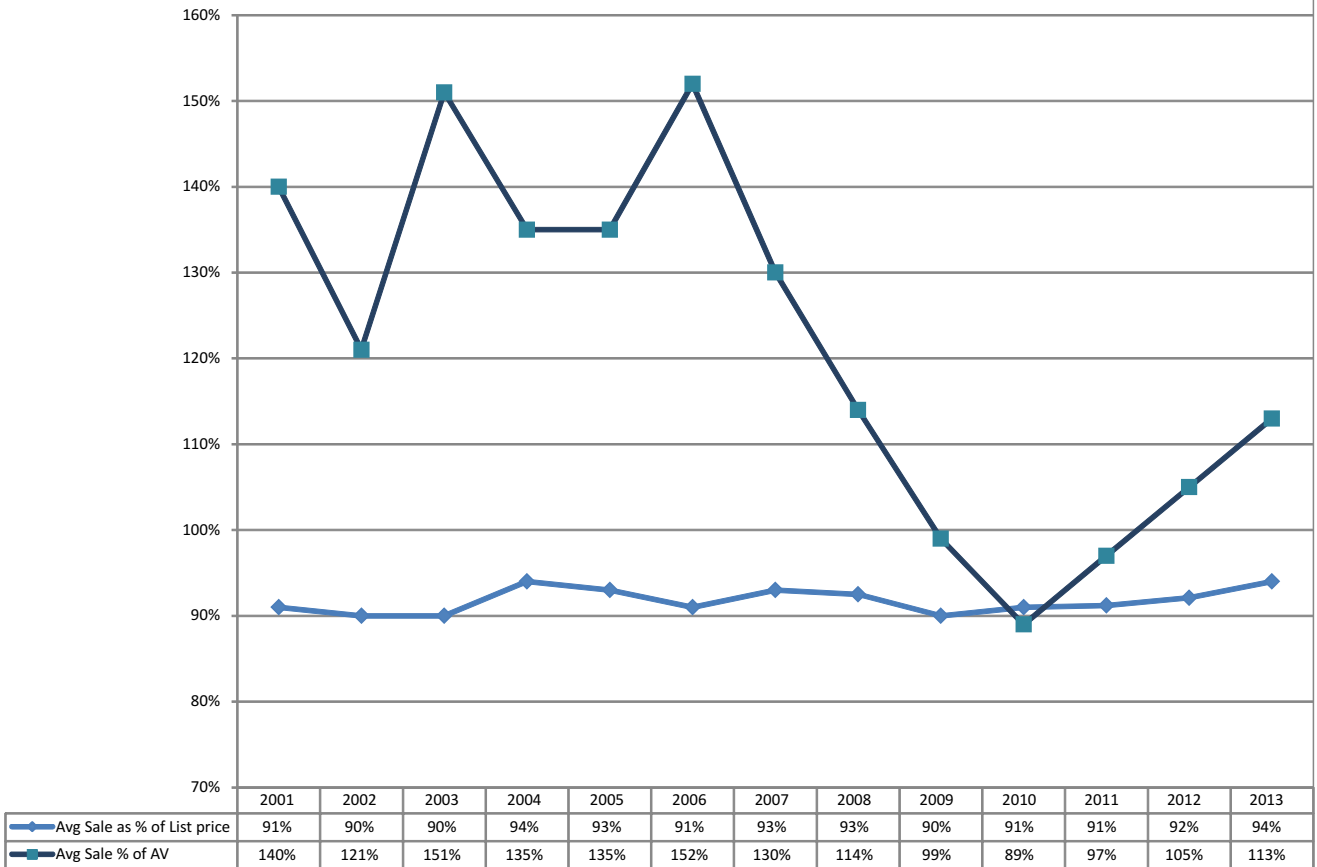


Nantucket: Lot Prices 2001 - 2013

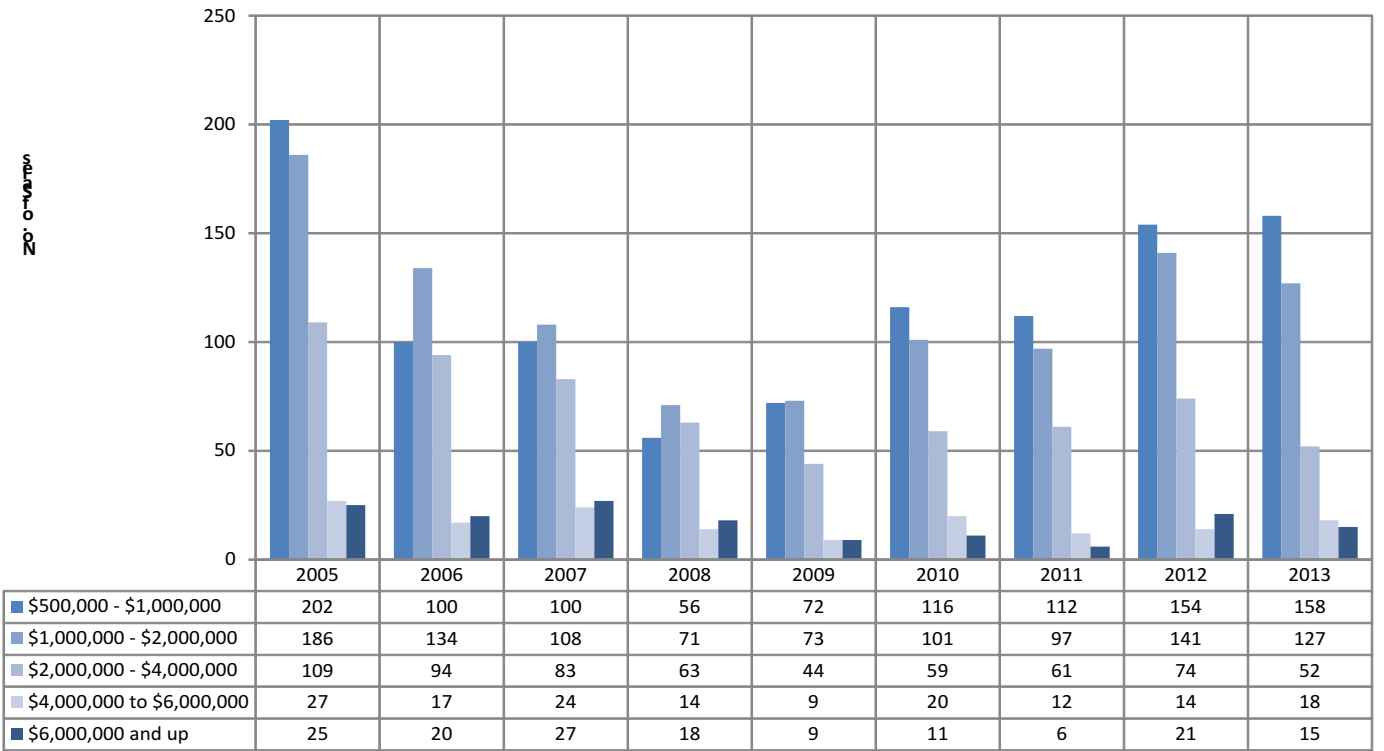
4th Q 2013



Nantucket: Sales as % of List Price and Assessed Value 4th Q 2013

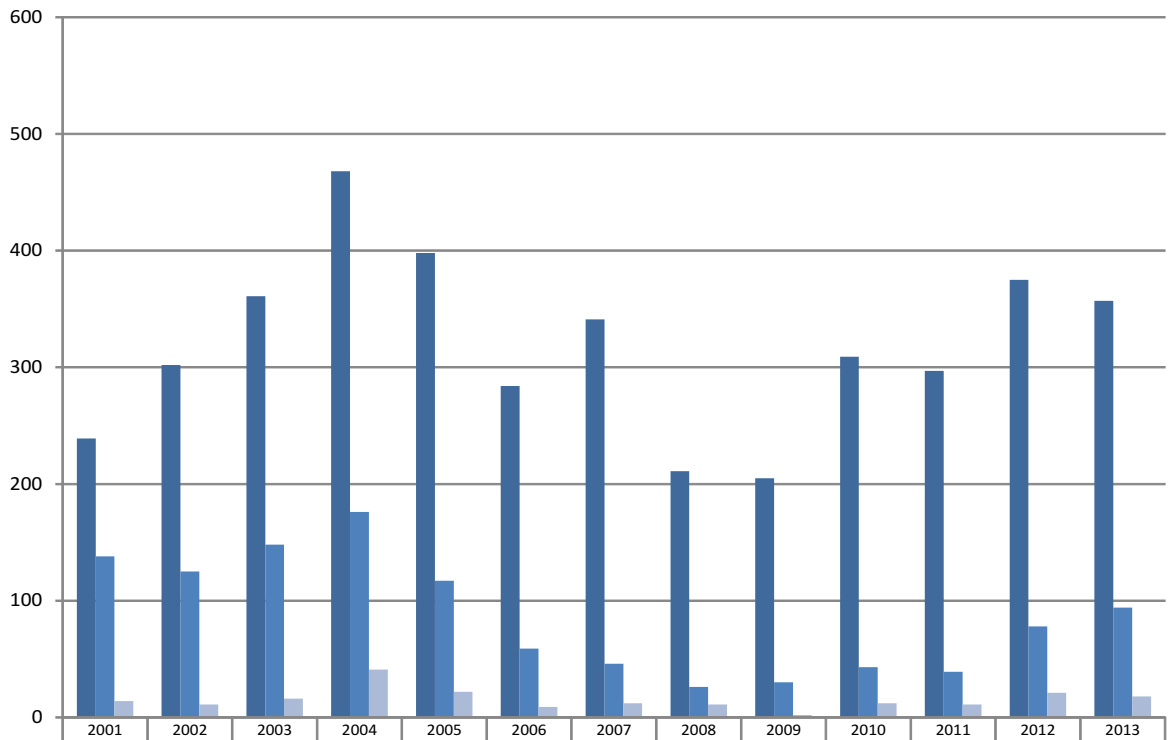


NANTUCKET Number of Sales by Price Range 2005-2013



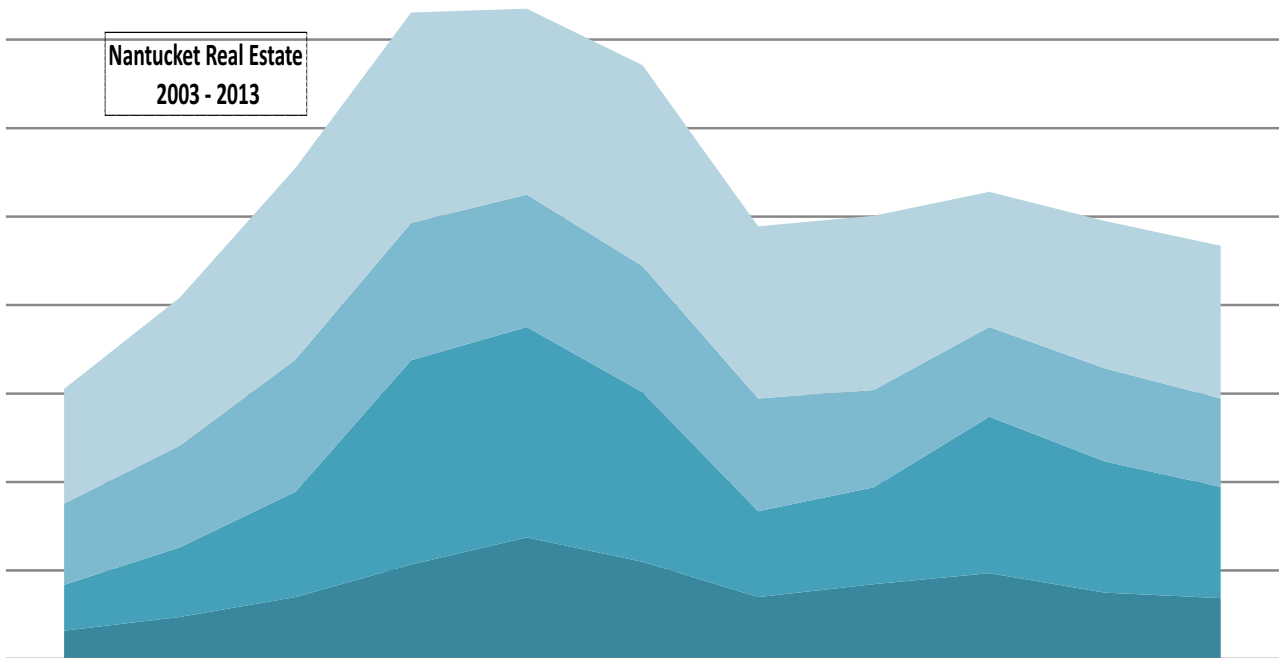
Nantucket: Total # Properties Sold Year to Date

As of 4th Q 2013



■ Total Homes Sold	239	302	361	468	398	284	341	211	205	309	297	375	357
■ Total Lots Sold	138	125	148	176	117	59	46	26	30	43	39	78	94
■ Total Commercial Sold	14	11	16	41	22	9	12	11	2	12	11	21	18

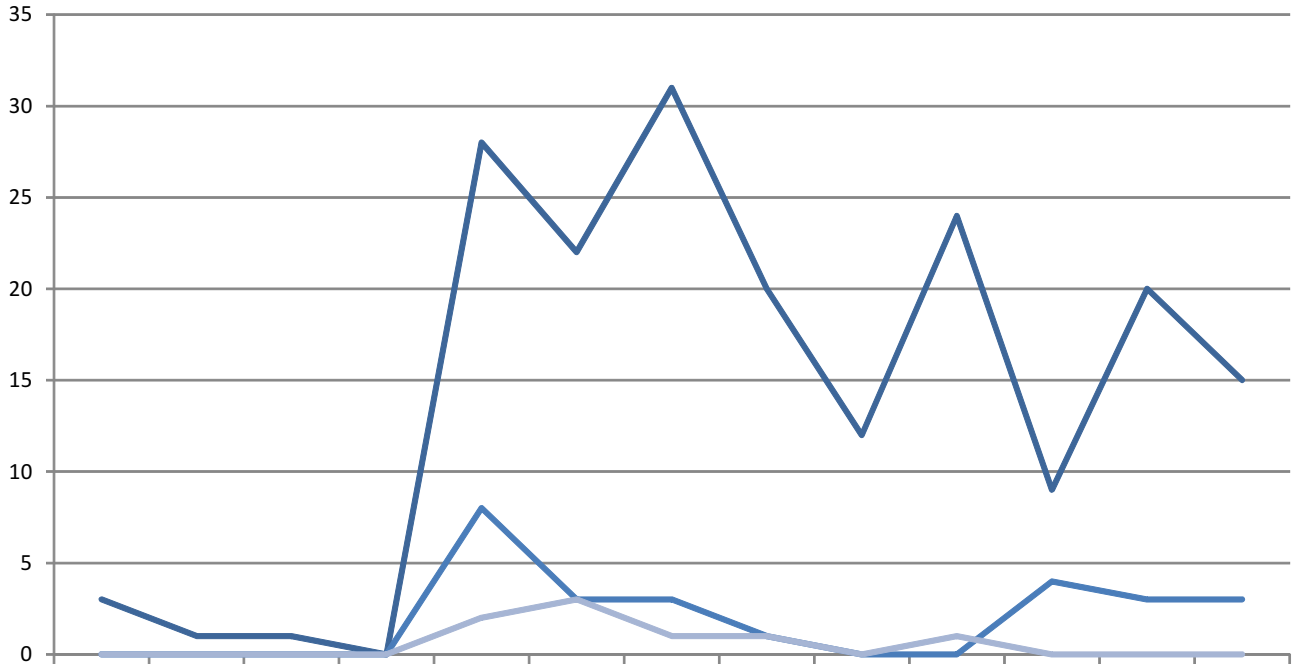
Nantucket Real Estate 2003 - 2013



■ Average Home	\$1,297,000	\$1,672,000	\$2,164,000	\$2,378,000	\$2,103,000	\$2,271,000	\$1,945,000	\$1,970,000	\$1,528,000	\$1,666,000	\$1,726,000
■ Median Home	\$917,000	\$1,150,000	\$1,495,000	\$1,550,000	\$1,495,000	\$1,425,000	\$1,275,000	\$1,100,000	\$1,013,000	\$1,050,000	\$999,000
■ Average Lot	\$519,000	\$787,000	\$1,190,000	\$2,311,000	\$2,378,000	\$1,915,000	\$970,000	\$1,095,000	\$1,769,000	\$1,483,000	\$1,258,000
■ Median Lot	\$320,000	\$475,000	\$700,000	\$1,067,000	\$1,375,000	\$1,100,000	\$700,000	\$845,000	\$970,000	\$750,000	\$688,000

Nantucket Sales Over \$5M

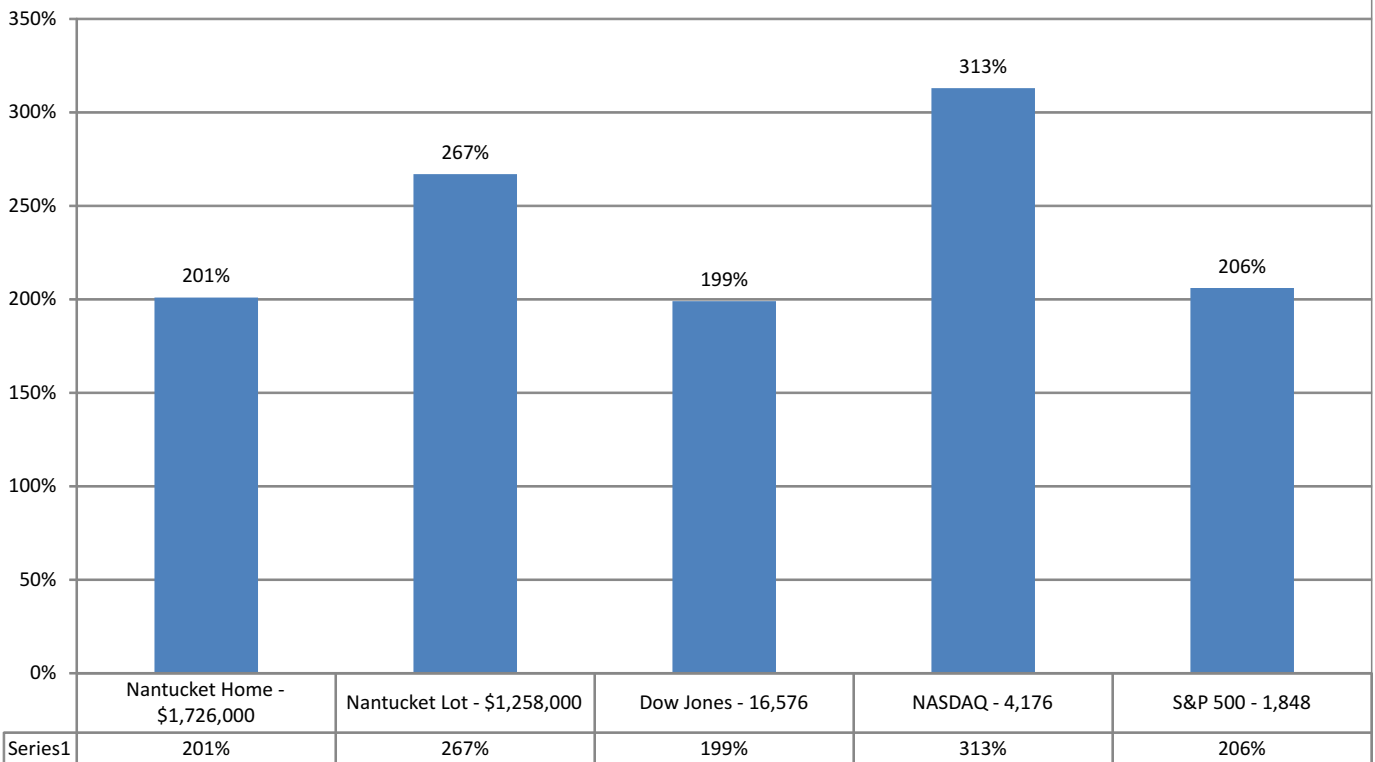
2001-2013



	2001	2002	2003	2004	2005	2006	2007	2008	2009	2010	2011	2012	2013
Houses	3	1	1	0	28	22	31	20	12	24	9	20	15
Vacant Land	0	0	0	0	8	3	3	1	0	0	4	3	3
Commercial	0	0	0	0	2	3	1	1	0	1	0	0	0

Ten Year Change in Value

as of December 31, 2013



Series1	201%	267%	199%	313%	206%
---------	------	------	------	------	------