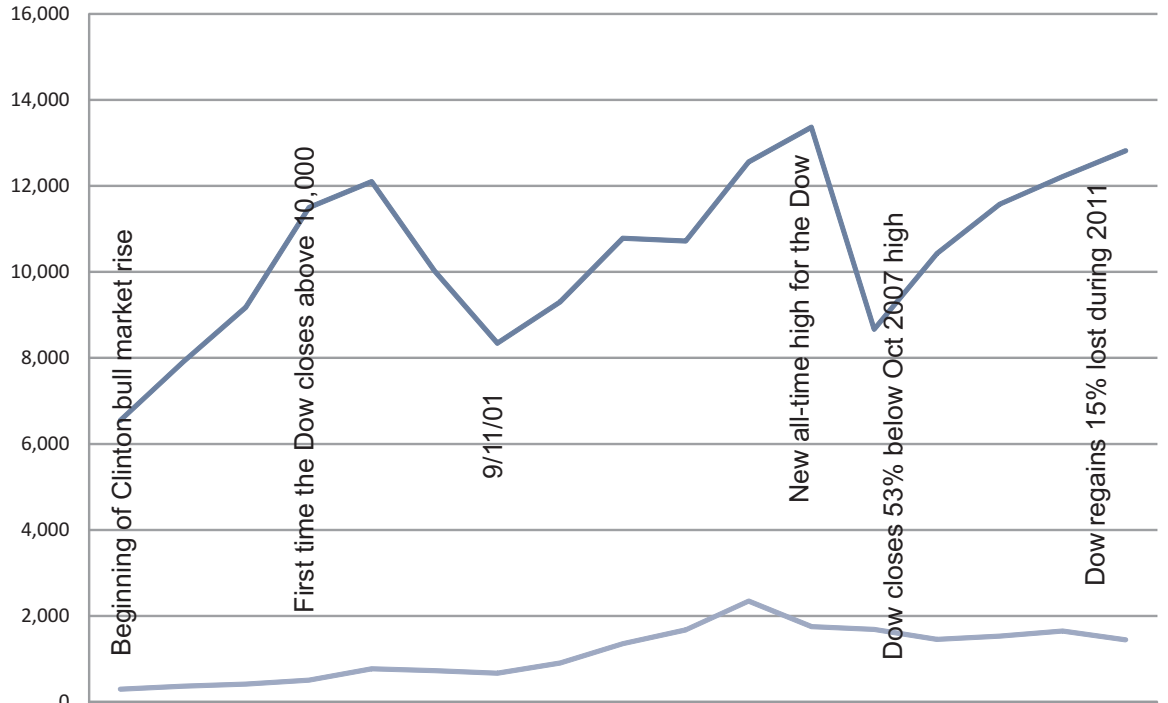
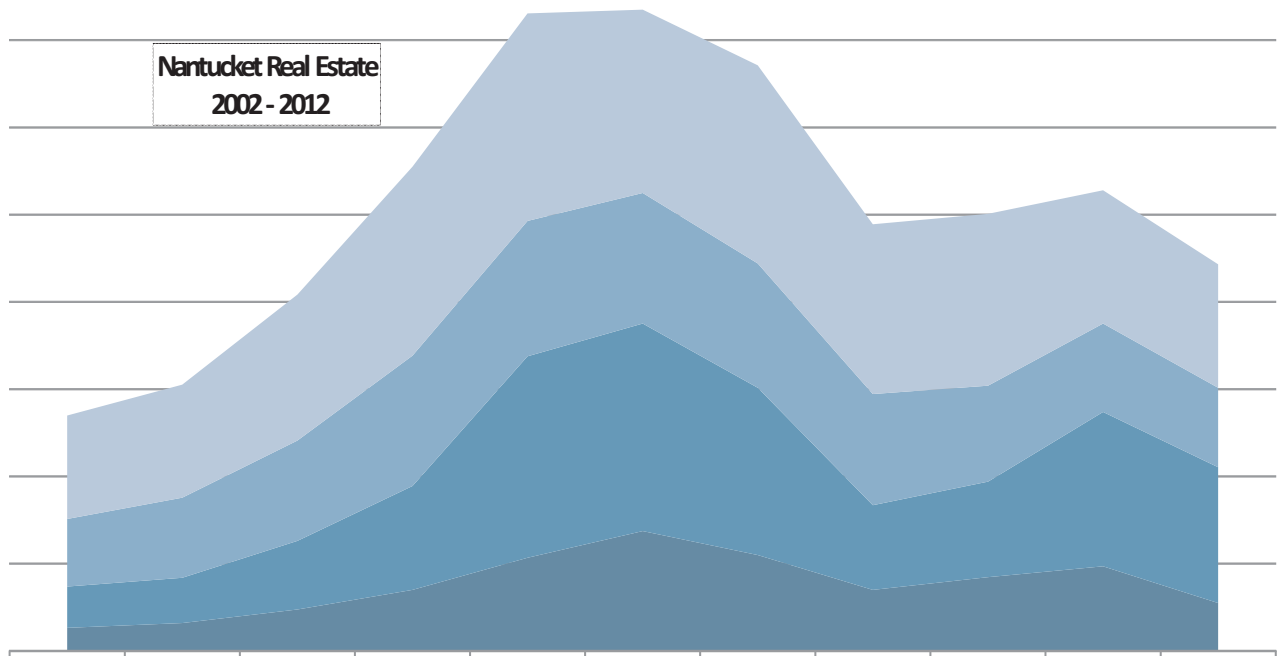


## Dow Jones and Average Nantucket Property Sales Trends: 1996-2012



	1996	1997	1998	1999	2000	2001	2002	2003	2004	2005	2006	2007	2008	2009	2010	2011	2012
Dow Jones	6,547	7,908	9,181	11,497	12,100	10,021	8,341	9,300	10,783	10,717	12,555	13,364	8,666	10,428	11,577	12,217	12,813
Average Nantucket Sale (000's)	298	366	417	509	770	726	667	908	1353	1677	2344	1752	1685	1457	1532	1648	1443

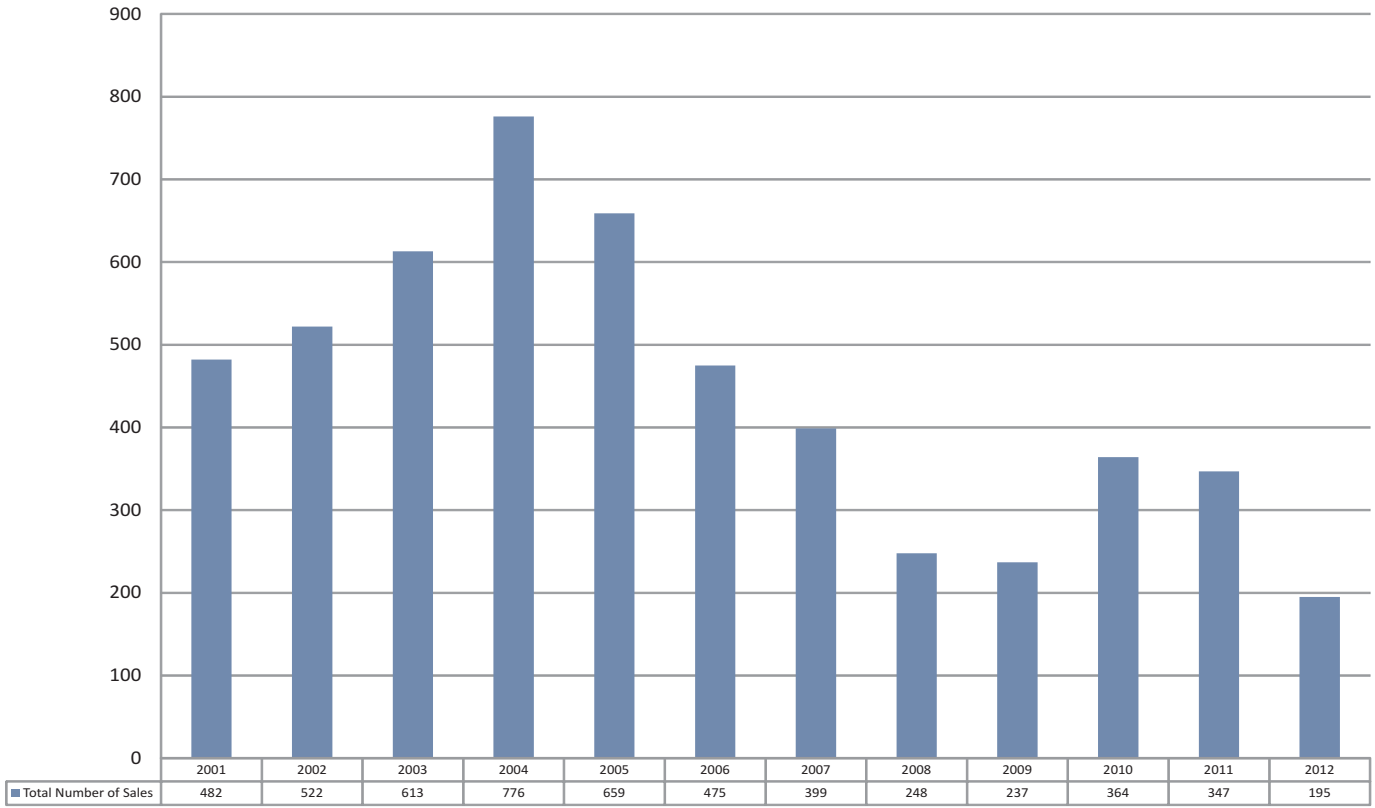
### Nantucket Real Estate 2002 - 2012



	2002	2003	2004	2005	2006	2007	2008	2009	2010	2011	2012
Average Home	\$1,187,000	\$1,297,000	\$1,672,000	\$2,164,000	\$2,378,000	\$2,103,000	\$2,271,000	\$1,945,000	\$1,970,000	\$1,528,000	\$1,416,000
Median Home	\$775,000	\$917,000	\$1,150,000	\$1,495,000	\$1,550,000	\$1,495,000	\$1,425,000	\$1,275,000	\$1,100,000	\$1,013,000	\$910,000
Average Lot	\$472,000	\$519,000	\$787,000	\$1,190,000	\$2,311,000	\$2,378,000	\$1,915,000	\$970,000	\$1,095,000	\$1,769,000	\$1,556,000
Median Lot	\$265,000	\$320,000	\$475,000	\$700,000	\$1,067,000	\$1,375,000	\$1,100,000	\$700,000	\$845,000	\$970,000	\$550,000

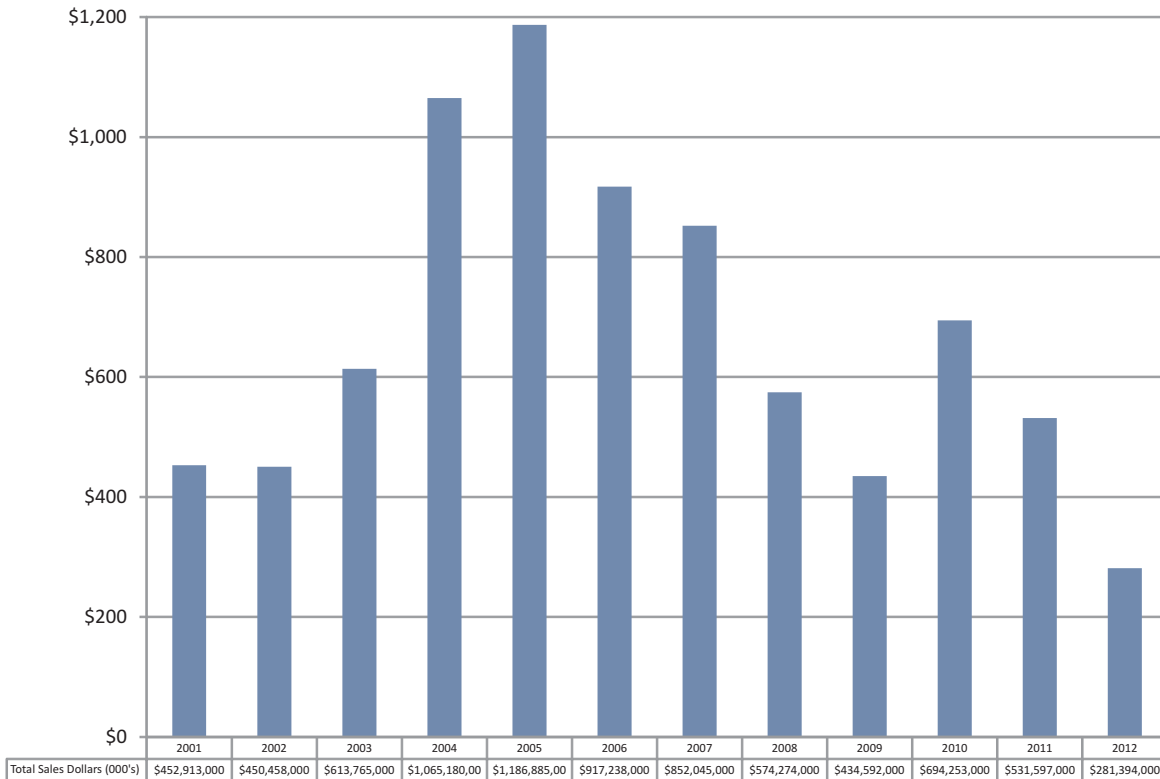
### Nantucket: Total Annual Number of Sales

June 30, 2012

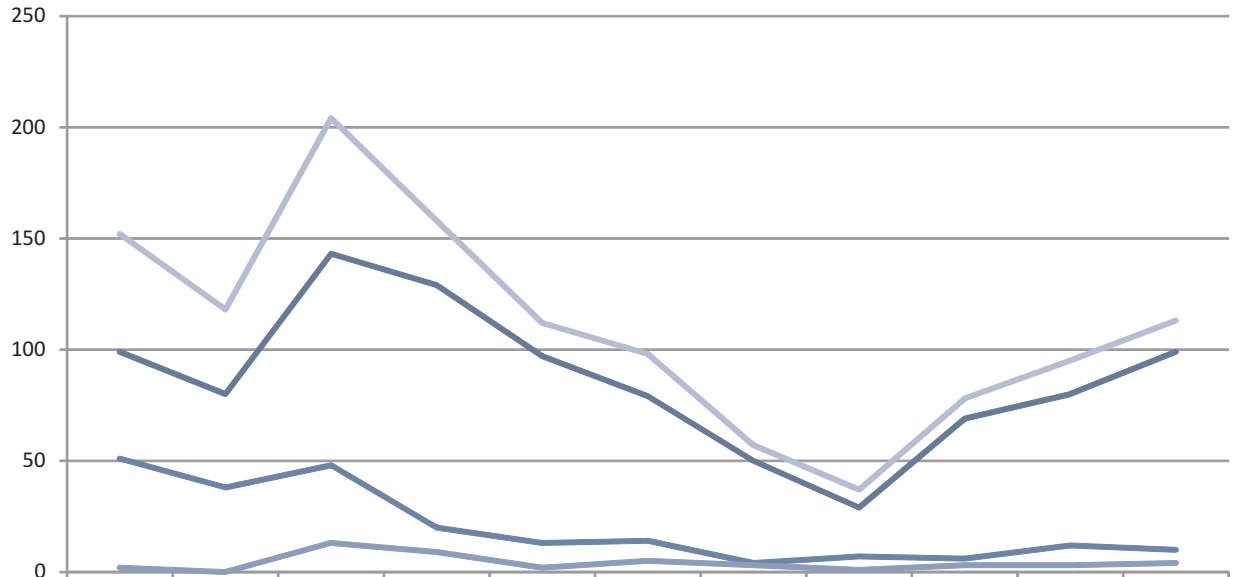


### Nantucket: Total Annual Sales Dollars

June 30, 2012

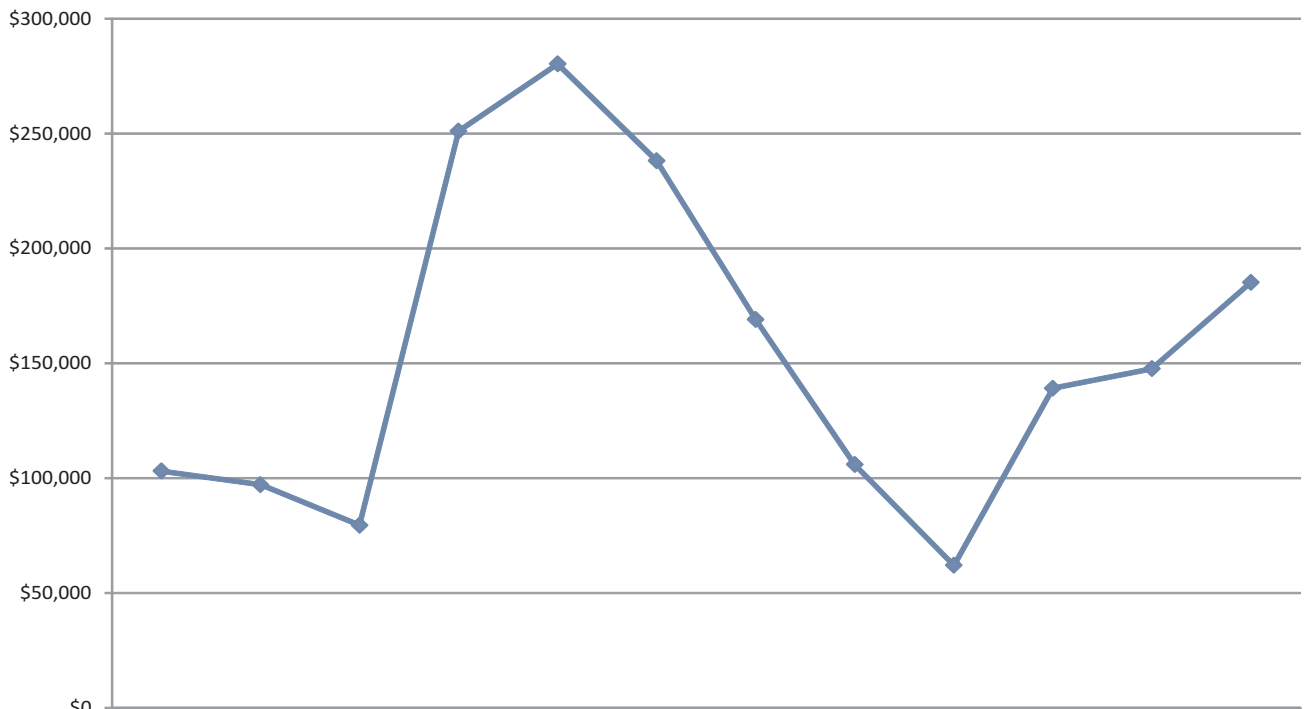


## Nantucket 2nd Quarter Sales Comparison



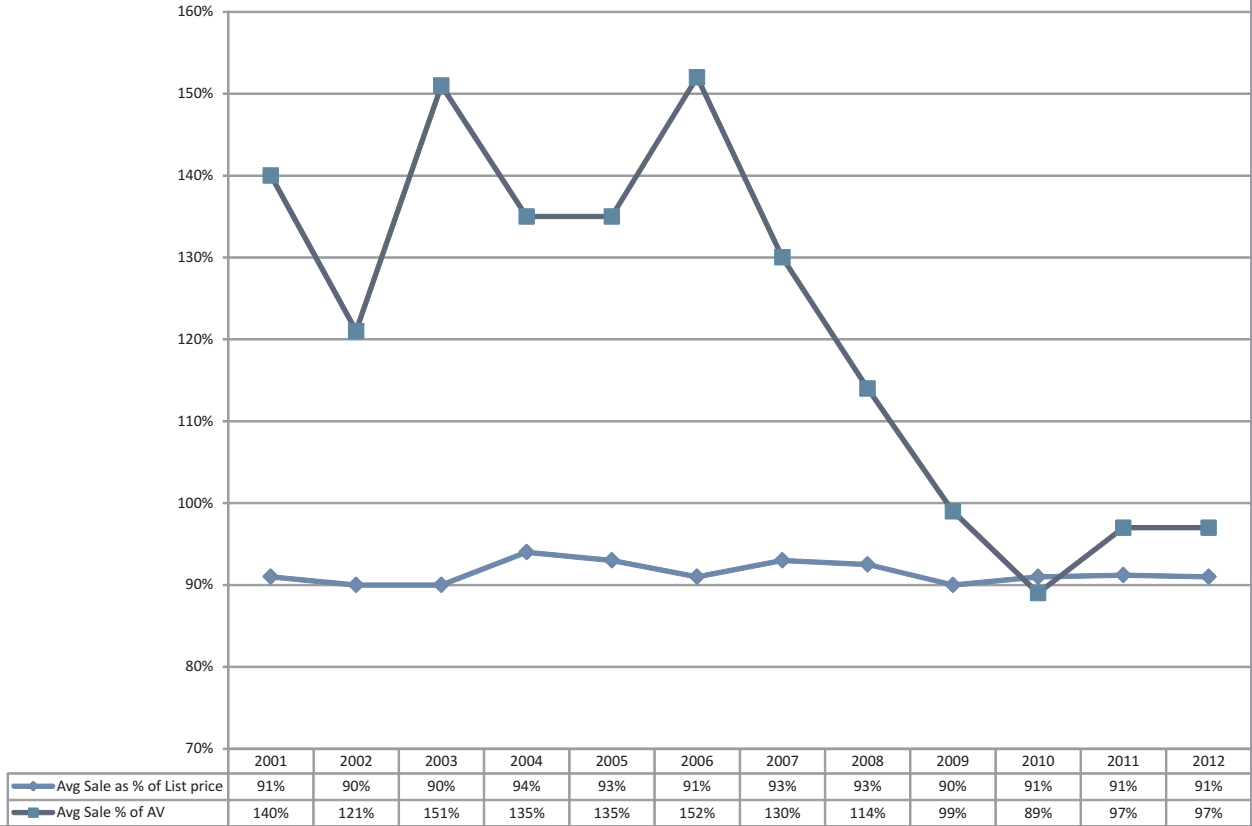
	2002	2003	2004	2005	2006	2007	2008	2009	2010	2011	2012
Houses	99	80	143	129	97	79	50	29	69	80	99
Land	51	38	48	20	13	14	4	7	6	12	10
Commercial	2	0	13	9	2	5	3	1	3	3	4
Total	152	118	204	158	112	98	57	37	78	95	113

## Nantucket 2nd Quarter Comparison Sales Dollars

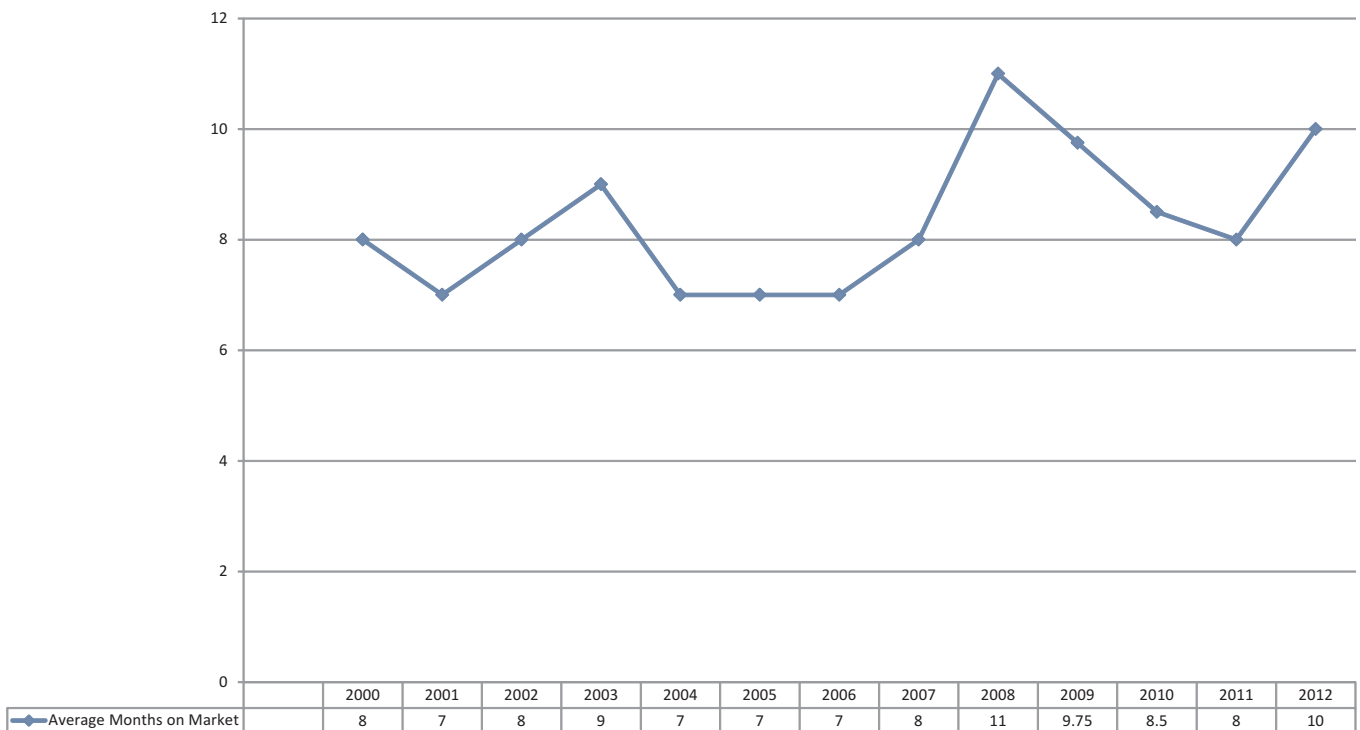


	2001	2002	2003	2004	2005	2006	2007	2008	2009	2010	2011	2012
Dollars 2nd Q. (000's)	\$103,111	\$97,170	\$79,509	\$251,106	\$280,298	\$238,203	\$169,052	\$105,941	\$62,124	\$139,175	\$147,671	\$185,262

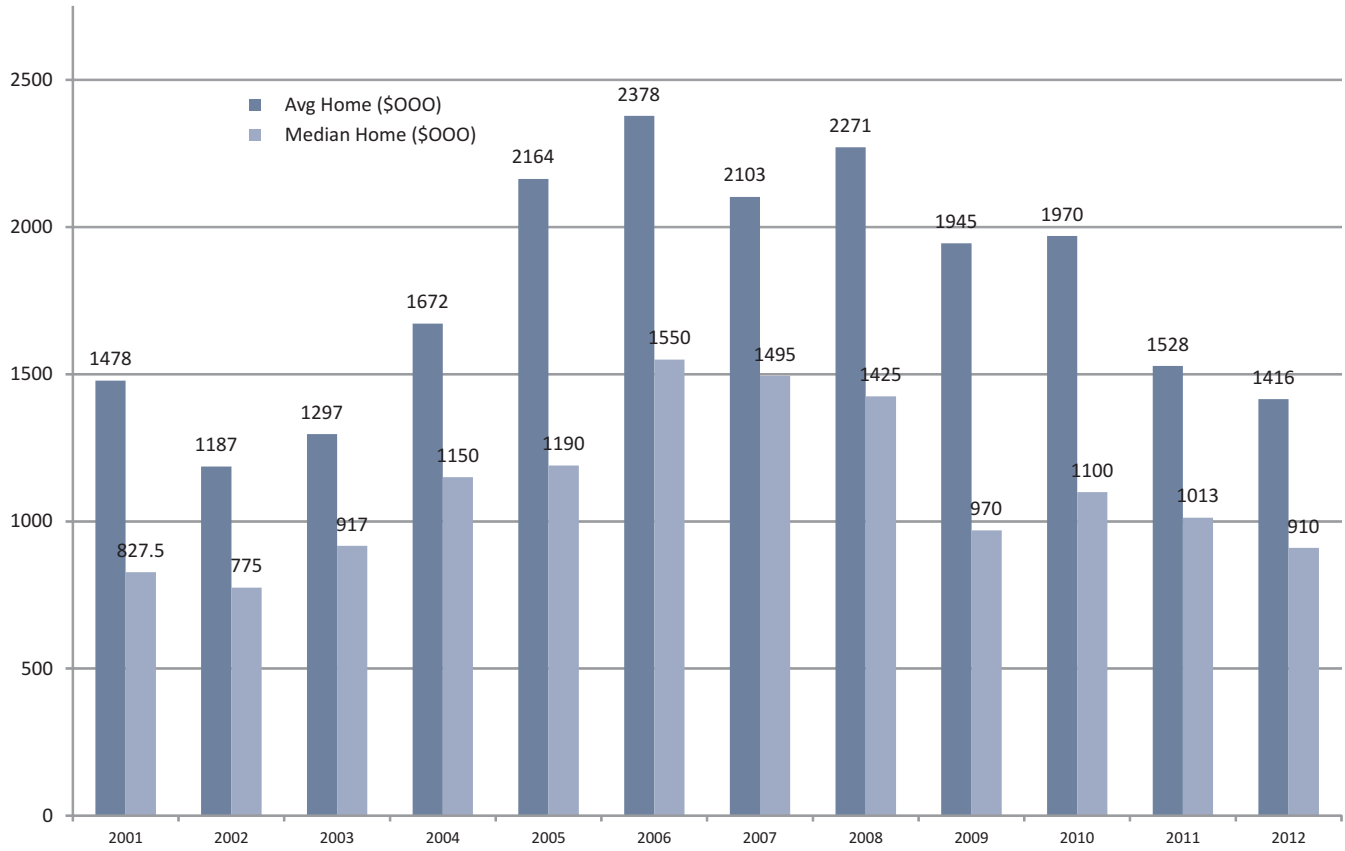
**Nantucket: Sales as % of List Price and Assessed Value**  
June 30, 2012



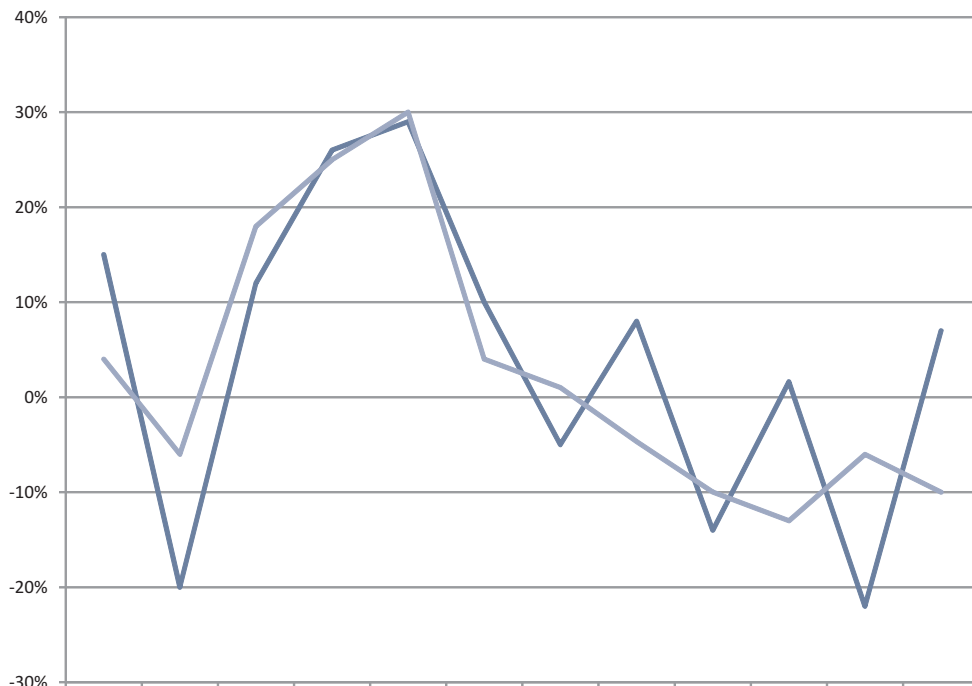
**Nantucket: Average Months on Market**  
All Properties



**Nantucket: Home Prices 2001 - 2011**  
June 30, 2012

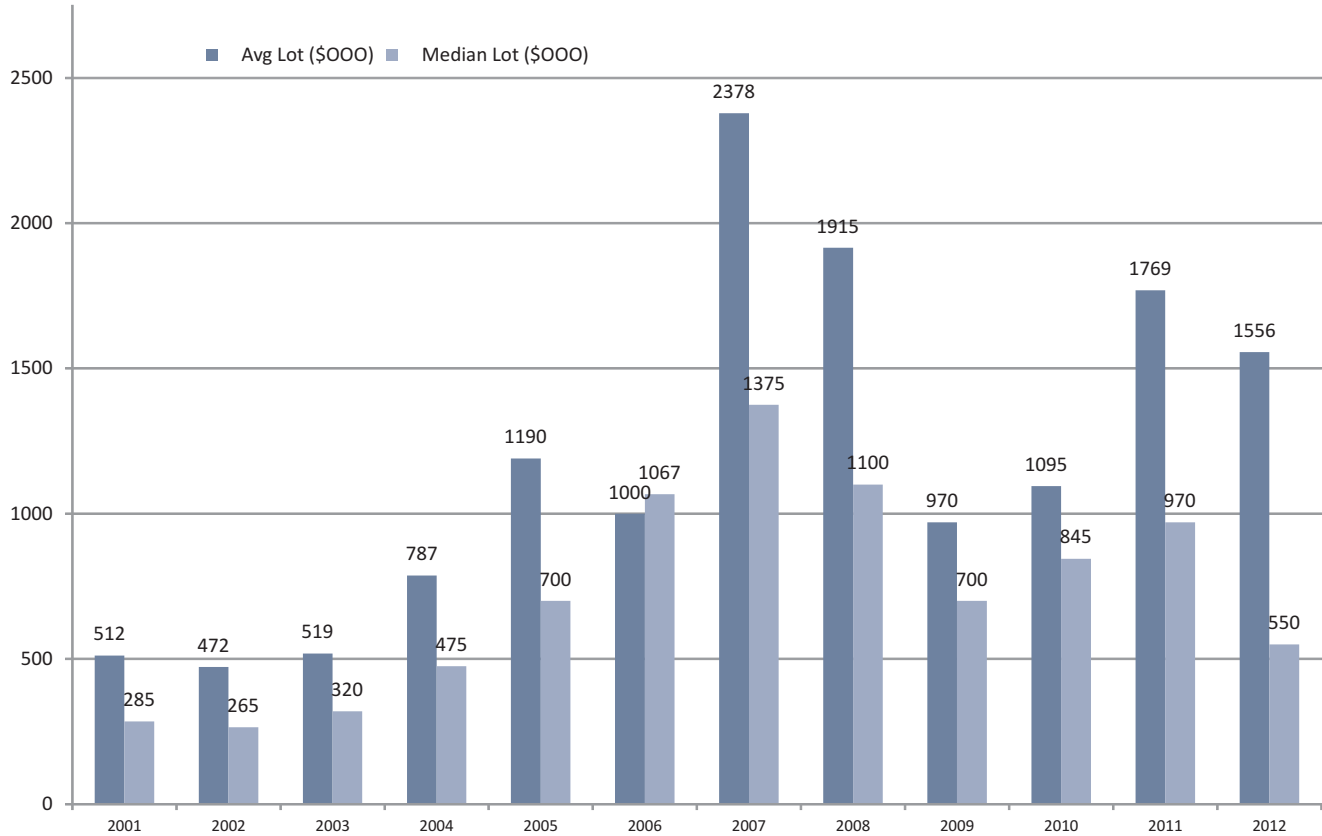


**Nantucket: Average and Median Home % Change in Prices**  
June 30, 2012

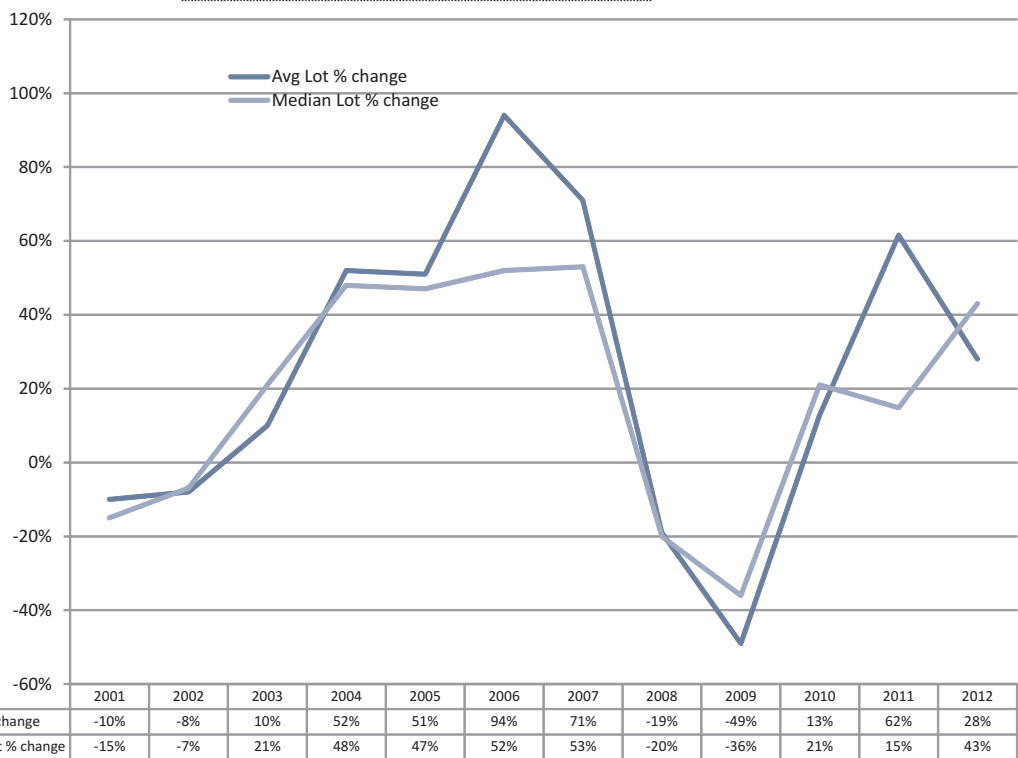


	2001	2002	2003	2004	2005	2006	2007	2008	2009	2010	2011	2012
— Avg Home % change	15%	-20%	12%	26%	29%	10%	-5%	8%	-14%	2%	-22%	7%
— Median Home % change	4%	-6%	18%	25%	30%	4%	1%	-5%	-10%	-13%	-6%	-10%

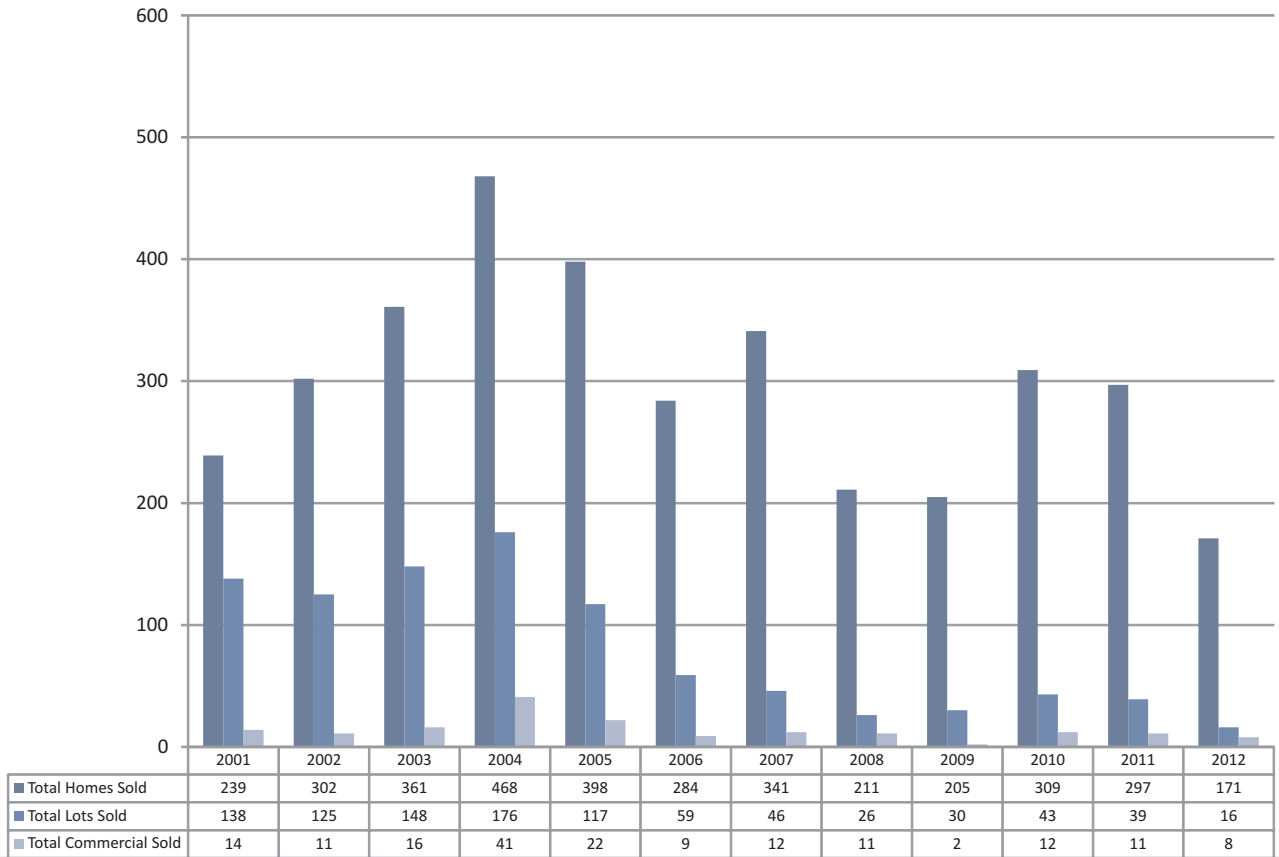
### Nantucket: Lot Prices 2001 - 2012 June 30, 2012



### Nantucket: Average and Median Lot % Change in Prices June 30, 2012



**Nantucket: Total # Properties Sold Year to Date**  
June 30, 2012



**Nantucket: Change in Sales Dollars 2001 - 2012**  
June 30, 2012

